

SWINDON TOWN



OFFICIAL CLUB SPONSOR



BARCLAYS

DIVISION TWO

IPSWICH TOWN

TUESDAY AUGUST 28th 1990

KICK-OFF 7.45 p.m.

OFFICIAL PROGRAMME £1.00

TODAY'S
MATCH SPONSOR:

Redman
Sheet Metal Ltd.
of Swindon



GWR

FM

97.2

FIRST FOR SPORT IN WILTSHIRE

We offer the most comprehensive sports coverage in the county.

Tune to 97.2 or 102.2 MHz for updates at:

06.45 07.45 08.45 13.10 17.15

Plus our weekend coverage starting on Friday at 17.15 with the exclusive Swindon Town coverage featuring Ossie Ardiles, players and management from the County Ground.

Saturday sport is a full four hours starting at 14.00 with detailed match coverage and radio's first classified football results at 16.55.

Promotion is no formality

Good evening and welcome back for the start of another season. Tonight we welcome the players, officials and supporters of Ipswich Town to the County Ground and I would like to give a special welcome to their new manager, John Lyall.

I think you could say that it's been an eventful summer! Firstly, I must congratulate everyone on the Play-Off Final at Wembley.

I felt that, on the field, the boys gave an outstanding performance and we thoroughly deserved our victory. Sunderland must have found the 1-0 scoreline very flattering because we could easily have won by a much bigger margin.

I would like to congratulate the supporters for their excellent behaviour. Not only did you contribute to an excellent atmosphere at Wembley, but you also reacted positively to the Football League's decision to demote us to Division 3. Well done.

In my opinion, the Football League's decision was extremely harsh. Although we did fight – through the High Court as well as through the FA – and at least won back our place in the Second Division, I was still disappointed with the final outcome.

Nevertheless, we must now try to put it to the back of our minds and try to win promotion again. This must be our main objective this season.

We proved last season that we have a good team, capable of winning promotion, and I am confident that we can do it again, but it will be no formality. In fact, I expect it to be even more difficult than it was last season.

We have recently sold John Cornwell to Southend for

£50,000 and I wish him well at his new club. John's departure now means that we need even more players to strengthen the squad.

However, though we may lack *quantity*, we do not lack *quality*. I must say that I am very happy with the players that we have.

We have worked hard during the pre-season friendlies and the games have gone well.

I must congratulate Alan McLoughlin for his World Cup appearances – which I hope will be the first of many. Well done Alan!

I have thoroughly enjoyed my first year here at Swindon and I have learned a lot. The players, staff and the people of Swindon and the surrounding area have made me and my family very welcome.

Thank you for the support that you have given me and the club during the last year. We will need it again if we are to win back our place in the First Division.



WELCOME TO THE COUNTY GROUND –HOME OF



SWINDON TOWN FOOTBALL CLUB

County Ground, Swindon, Wiltshire
SN1 2ED

Telephone:

(0793) 642984 (Main Office and
Commercial Department)

(0793) 611499 (Travel Club)

(0793) 535130 (Rendezvous Club)

Fax: (0793) 642984 (9am - 5pm)

(0793) 536170 (after 5pm)

President: C. J. Green

Chairman: G. W. Herbert

Vice Chairman: C. M. Howard

Directors: L. Smart, N. H. Arkell,

K. J. Chapman

Chief Executive: P. Day

Manager: O. Ardiles

Non Executive Directors:

D. Alderton, R. M. Mattick JP,

M. Z. Tryczynski

Club Secretary: Miss L. A. Maberley

Commercial Manager: D. Buswell

Assistant Manager: P. D. Bates

Coach: A. A. Rowland

Youth Team Manager: J. Trollope

Physiotherapist: K. Morris

Hon. Medical Officer:

Dr. J. D. Nicholas

Chaplain: Rev. N. Sands

Official Club Sponsor: GWR FM

Today's Match Sponsors are:
REDMAN SHEET METAL LTD.
who is primarily a sub-contract sheet
metal company providing a range of
sheet metal work on both ferrous and
non ferrous materials.

The company supply a wide range of
industries with metalwork e.g. medical
and vending trolleys for use in the
hospital service, check out equipment
for use in supermarkets, together with
aluminium and stainless products for the
telecommunications, furniture and
electrical industries. It has a wide
customer base concentrated on the
Swindon locality and would welcome
enquiries from local companies: Perhaps
the company's only drawback is that one
of its directors lives in Nuneaton and is a
Coventry City Supporter!

This is the official programme of
Swindon Town Football Club.
Individuals contributions do not
necessarily represent the views of the
club.

Edited by **Graham Carter** with the
valued assistance of **Paul Plowman**.

Printed by **Thamesdown Litho**

Front cover: Steve White goes up for a cross
with Sunderland 'keeper Tony Norman in our
Play-Off Final victory at Wembley.

In Town Today

Welcome to the players, officials
and supporters of

IPSWICH TOWN



IPSWICH TOWN - FIRST TEAM SQUAD SEASON 1990/91

Back row left to right: Lee Honeywood, Phil Mitchell, Steve Palmer, Brian Gayle, Chris Swailes, Gavin Johnson, David Gregory, Gary Durrant, Andy Banks.
Middle row left to right: Louie Donowa, Simon Milton, Neil Thompson, Tony Humes, Craig Forest, Phil Parkes, Phil Whelan, David Lowe, Gary Thompson, Ian Redford.
Front row left to right: Mick Stockwell, David Linighan, Glenn Pennyfather, Romeo Zondervan, Jason Dozzell, Frank Yallop, Chris Kiwomya, David Hill.

IPSWICH TOWN: FORM GUIDE

How they finished last season . . .

| | H | A | Goalscorers | Att. |
|-------|------------------|------|-------------------------|--------|
| Apr 7 | Watford | D3-3 | Stuart, Wark | 11,158 |
| 10 | Portsmouth | L0-1 | | 11,062 |
| 14 | Port Vale | W3-2 | Wark, Dozzell, Thompson | 10,509 |
| 17 | West Ham Utd | L0-2 | | 25,178 |
| 21 | Hull City | L0-1 | | 9,380 |
| 25 | Middlesbrough | W2-1 | Lowe, Milton | 15,233 |
| 28 | Blackburn Rovers | W3-1 | Milton, Lowe | 11,007 |
| May 1 | Hull City | L3-4 | Lowe (2), Redford | 5,306 |
| 5 | W.B.A. | W3-1 | Low, Milton, Dozzell | 11,567 |

IPSWICH TOWN - THE LAST 15 YEARS

DIVISION 2 DIVISION 1



GWR FM 97.2

AND SWINDON TOWN

The squad

Romeo Zondervan. The club captain - a Dutch international born in Suriname. Joined Ipswich in 1984 from West Bromwich Albion. Previously with Dan Haeg and Twente Enschede. A competent mechanic and fully-qualified pilot who plays in midfield but can also operate as full-back.

Phil Parkes. Former West Ham and QPR quality goalkeeper who joined Ipswich in June 1990 from West Ham on a free transfer. Now 40, he has signed a one-year playing contract and is also involved in coaching the goalkeepers at Portman Road. He has one England cap.

Brian Gayle. Ipswich Town's record signing when he joined the club in January 1990 from Manchester City for a fee of £330,000. Previously with Wimbledon. A tough central defender who was formerly captain of Manchester City.

Glenn Pennyfeather. Former Ipswich manager John Duncan paid Crystal Palace £80,000 for Glenn last October, but a combination of injuries and illness restricted his first team appearances to just nine. Had seven seasons with Southend and two at Palace.

Jason Dozzell. Tall, Ipswich-born playmaker who can operate in midfield or attack. An under 21 international who became the youngest ever First Division scorer with a goal on his debut against Coventry in 1984. Appeared in every league game for Ipswich last season.

Craig Forrest. Has spent two seasons firmly establishing himself as the first choice

goalkeeper for Ipswich. Also Canada's no. 1 with 15 caps. Joined Ipswich as an apprentice and made his debut in August 1988. Voted last season's Players' Player of the Year.

Frank Yallop. Full-back, central defender or midfielder, now a full Canadian international after making his debut in May 1990 against the USA. Born in Watford but brought up in Vancouver from the age of 10, he joined Ipswich as a youth and gained England youth honours.

David Hill. Former Scunthorpe full back or midfielder who joined Ipswich in June 1988. Began his career with Notts County, but didn't play in their first team. Three unlucky injuries last season restricted him to just three appearances.

Tony Humes. A fierce tackler who can play at full-back, in midfield or in his favoured position of central defender. He joined Ipswich as an apprentice in 1983 and overcame a bad leg injury early in his career. A regular first team squad member since 1986.

David Lowe. Former England youth striker, previously with Wigan, now with under 21 caps. Suffered a knee injury in November, but eventually bounced back with six goals in four games and finished as the club's leading League goalscorer for the second time in three seasons.

Simon Milton. Goalscoring midfield player who came into the professional game late.

After signing for Ipswich, Simon gained valuable League experience on loan to Exeter and Torquay. Now firmly established in the Ipswich midfield, he cracked in eleven goals last season.

Ian Redford. Left-sided midfielder who cost £200,000 from Dundee United in November 1988. Previously with Dundee. Moved to Glasgow Rangers in 1979 and spent six years at Ibrox before signing for Dundee United in 1985. A Scotland under 21 international.

Chris Kiwomya. Nicknamed 'Benson' from the TV series. A fast-raiding striker with explosive pace and good close control. Born in Huddersfield, his brother Andy is the former Barnsley and Sheffield Wednesday striker. He made his senior debut in October 1988.

David Linighan. Joined Ipswich for a then record fee of £300,000 in June 1988. Played for his hometown team, Hartlepool, before moving to Derby and then Shrewsbury. His brother is the former Oldham and Norwich defender Andy, who now plays for Arsenal.

Mick Stockwell. Right-sided midfielder or defender who was on schoolboy forms with Leyton Orient and played for them when he was still at school. Served his apprenticeship with Ipswich. Now hoping for a regular first team place. Is also a keen cricketer.

Neil Thompson. In only his first season with the club last season, Neil was voted Player of the Year. A late-comer to professional football, he was previously with Hull City, Nottingham Forest and Scarborough. He is the club's penalty taker.

GWR FM 97.2

THE WINNING COMBINATION

PAUL PLOWMAN looks back at a year in the life of Swindon Town – the first in a series of articles charting the Town's progress through the years.

1958/59

Swindon Town earned a place in the new Third Division by finishing in the top half of the table in the last Third South campaign in 1957/58. Ending in fourth place that year was a remarkable improvement on previous performances of 23rd and 24th. The players' efforts were rewarded with a club tour of Germany (2 games) and France (3) during May 1958.

The abolition of regional football brought many new clubs to Swindon – and none of the first four visitors had previously done League battle at the County Ground – Wrexham, Hull City, Accrington Stanley and Rochdale.

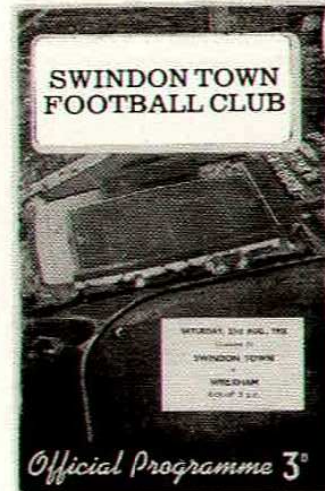
There were two new signings in the opening line-up on August 23, winger Johnny Stephens (from Hull) and former Chippenham Town wing-half Rex Tilley.

The Town lost only two of their first 13 games, a run which took them to third spot in the table. Plymouth, eventual champions that season, saw that the sequence came to an end in front of more than 26,000 fans at Home Park.

In a 3-1 away victory over Chesterfield, Jimmy Kelly grabbed a 16-minute hat-trick. He followed that by opening the scoring in Swindon's next game, at Bradford, in 22 seconds.

November 1 saw the official opening of a new – or rather 'second hand' – stand on the Shrivensham Road side of the ground, which cost the club £27,000. It increased the seating capacity by over 1,400. The most expensive seats were on offer at all of six shillings (30p)! Reading were the visitors that day and the occasion attracted the biggest home gate that season – 19,838.

A 2-2 draw at Brentford



marked the last ever appearance of Swindon Town on a Christmas Day.

The Town plunged from 7th to 19th place in the new year, in a dismal spell which saw them take just one point from eight games. That point came at Peel Park in Accrington a month after a fruitless trip to the same venue, when a waterlogged surface brought a halt to proceedings after only 37 minutes' play.

On March 27, club skipper Maurice Owen broke his right leg at Doncaster and was to be out for over a year. Winger Arnold Darcy had also been in the 'wars', breaking his left collar bone twice and missing eleven weeks of the season.

Swindon eventually finished 15th, with a last day defeat at Q.P.R. being the only reverse in the last ten games. New signing Willie Marshall, who arrived at the end of February, hit two goals on his debut and scored seven in 14 appearances.

SWINDON TOWN were struck a crippling blow in the 15th minute at Doncaster yesterday, when Maurice Owen, their captain and left half, broke his right leg.

There was no score at that stage but afterwards Doncaster took advantage of the Town's handicap to score twice without reply.


Owen's injury, which occurred as the result of a tackle on Doncaster's centre forward, Fleisher, was a pure accident but the crash could be heard in all parts of the ground.

It was quickly realised that the injury was serious and Owen was taken to Doncaster Royal Infirmary where he was detained. The hospital authorities stated after an X-ray examination that there were no complications.

INCHES WIDE

Before the accident Swindon were on top. They might have been a goal up inside ten minutes when a pass from Marshall gave Richards a splendid opening but the inside right shot flicked wide.

A few minutes later Richards again broke through but this time he was successfully tackled. Right half Fountain also went close with a volley.



MAURICE OWEN

Playing only four forwards, Swindon could never mount an attack which seriously threatened Doncaster, apart from one just before half-time when Richards hit the woodwork after Nimmo,

ARKELL'S

EST. **BREWERY** 1843



Shaun Hodgetts "In-Depth"

With Wembley memories still fresh in the mind, the new season in prospect has the vast majority of players and supporters across the country in optimistic mood. It's obviously a time to look forward but pausing for thought for a second to look at the campaign.

The campaign just ended (I think I must have missed the summer break). We should all congratulate Ossie Ardiles on his team's efforts on-the-field. Samba soccer, or whatever other journalistic cliché describes it, is a delight to watch and as Chic Bates pointed out, Swindon's promotion play-off final performance was made of the passing and movement skills which had been on show in 35/40 matches week in, week out, since last August.

There's a definite sense of eager anticipation about our national game, and there's no exception at the County Ground. It's also, of course, the start of a new international reign – the dawn of a brand new era. Let's consider Graham Taylor's approach to his new appointment in the first of our series of "In-Depth" articles, examining a different topic in each programme.

He has a few, if any, critics, although television correspondents suggested he might well be employed by the diplomatic camps, judging by his distinctly non-tough-talking display in front of the cameras during the World Cup. But then, would you really have expected him to criticise his immediate predecessor? However nice he is, history will judge him by comparison with Bobby Robson, Ron Greenwood and the rest.

GWR has only had one opportunity to interview him at close quarters, when Aston Villa were the Town's guests three seasons ago. He was definitely a "media man" then and more than happy to oblige.

It's been widely suggested that Matthew Le Tissier of Southampton will be the first new cap this autumn. Ironically it was The Dell where Graham Taylor began his League team training sessions backing up his statement that he aims to become our most tracksuited boss of all time. Such a "hands on" attitude has to be commended, in ensuring close contact is maintained between club and country.

Lawrie McMenemy is installed as the manager's assistant – amazing how the deal should have been struck under the noses of the world's media at Italia '90, but there was no hint of his return to football from Fleet Street. It's been suggested to me that the "big man" poses no threat since his chance to take over at the top went years ago. In contrast, aspiring younger candidates are being given ample opportunity to sample the England scene for themselves – Joe Royle of Oldham takes charge of the Under-21s soon. This is taking a lead from West Germany where Berti Vogts is succeeding Franz Beckenbauer, having been his right hand man and effectively serving an apprenticeship before their rise to the top of the international tree. It was our own set of results in the competition which could set the scene for the return of the sweeper to the domestic game.

Peter Shilton announced his retirement from that level of the sport and Brian Robson

SHAUN HODGETTS OF GWR FM WITH THE FIRST OF HIS "IN-DEPTH" LOOKS AT THE FOOTBALL SCENE.



was again dogged by injury. Both professionals reportedly still have a role to play for England, for Graham Taylor who got the nod over Howard Kendall while Terry Venables probably completed the 3-man short-list.

Who am I to argue with that selection and a man who's trying to pull everybody together in the same direction with similar objectives. As Ossie Ardiles said of Swindon Town, a house divided will fall, but there are no limits for a united one. Teamwork is the key.

Enjoy the game. "In-depth" is here in every programme. The sports radio programmes are "on-the-air" Friday teatimes and Saturday afternoons for in-depth analysis of your favourite football club.

Keep it GWR FM.

LEMON & CO

SOLICITORS

*A SUBSTANTIAL PRACTICE ABLE TO
PROVIDE ADVICE & HELP IN ALL
ASPECTS OF COMMERCIAL & PRIVATE LIFE
AND INCLUDING A FRIENDLY, THOROUGH
AND PROFESSIONAL CONVEYANCING
SERVICE*

Richard Fry, Timothy Dixon, Deirdre Moss
34 Regent Circus
Swindon SN1 1PY
Tel: SWINDON 527141
FAX: SWINDON 614168

Martin Evans, Stephen Moss
148 High Street
Wotton Bassett SN4 7AB
Tel: SWINDON 853665
Fax: SWINDON 850324

Richard Challis, David Halfhead
1 Little London Court
Old Town, Swindon SN1 3HY
Tel: SWINDON 527141
Fax: SWINDON 511639

SWINDON T O W N

CLUBCALL

0898 12 16 40

AVAILABLE FROM ANYWHERE IN THE U.K.
7 DAYS A WEEK 52 WEEKS A YEAR

SWINDON

CLUBCALL

Calls cost 33p/minute cheap; 44p/minute other times.

BT Supercall, 1-9 Downham Road, London N1 5AA.

 SUPERCALL



The Junior Robins said a big thank you to Barclays Bank for making their visit to Wembley (for the Swindon Town v Sunderland play-off final) such a fabulous day out. Tony Eves of Barclays presents a cheque for £250.00 to Ray Butt, the Junior Robins coach/trainer.

Changes In The Rules

For the first time in 65 years, there has been a change in the offside rules. Players will now no longer be adjudged offside if level with the last-but-one defender as the ball is played. FIFA explained that the change was 'to give the attacking player an advantage over the defender'.

The last change to the offside rule was in 1925, when the number of players to be between the attacker and the goal was reduced from three to two.

Another change to the rules is that players committing 'professional fouls' will now be sent off - in line with FIFA's World Cup directive.

The wearing of shin pads has also become obligatory - again following a World Cup directive.

Attendances Up

Total League attendances last season were up for the 4th consecutive year. The total of 19,466,826 was the highest since 1981/82.

Not To Be Confused With

Today's referee is Mr. Keith Cooper from Pontypridd. He is not to be confused with Swindon referee Keith Arthur Cooper.

Today's Keith Cooper has been on the Referee's List since 1982, having progressed via the Welsh League. He has refereed the Welsh Cup Final (in 1986) and last year he refereed three internationals. Mr. Cooper is a 42-year-old Mobility Officer.

Tell Us What You Think

You will have noticed by now that the price of this season's programme has gone up to £1. The increased cost is due to inflation and we feel that the price now brings it into line with most other Second Division programmes. You will also have noticed a change in both the style and much of the content. We are particularly pleased to have acquired the services of Julian Wilson.

Please let us know what you think of the new programme, especially if there is anything you'd particularly like to see in it. Write to The Programme Editor, c/o The County Ground.

Programmes For Sale

T. Ranger, from Cirencester, has over 1,000 Swindon Town programmes (home and away) for sale, along with framed team and action photographs. Offers are invited. Phone (0285) 657612.

New Faces

Swindon Town formally welcomes two new faces to the County Ground this evening. Peter Day, our new Chief Executive, and Harry Hughes, our new Marketing Manager, were both formerly at Tottenham Hotspur and renew their friendship with Ossie.

In The Next Programme

Our next home match is the all-ticket derby with Bristol City on Sunday, September 2nd. Look out for a profile of 'Martin T' - the new supporters' representative on the board - in the programme. Martin explains how he came to be appointed and how he can be contacted.

PLUS

30 things you probably didn't know about David Kerslake.

PLUS

Paul Plowman's look back to 1959/60.



FM 97.2

**CALL THE RADIO LINE FOR THE
LATEST SPORTS NEWS 24 HOURS A DAY
ON 0898 333000**

Calls charged at 36p/min peak/25p/min all other times

BETTER BUY BURMAH

Burmah Petroleum Fuels Limited
is proud to support Swindon
Town Football Club and offers a
warm welcome to all supporters
at:

Swindon Autopoint
Marlborough Road, Swindon

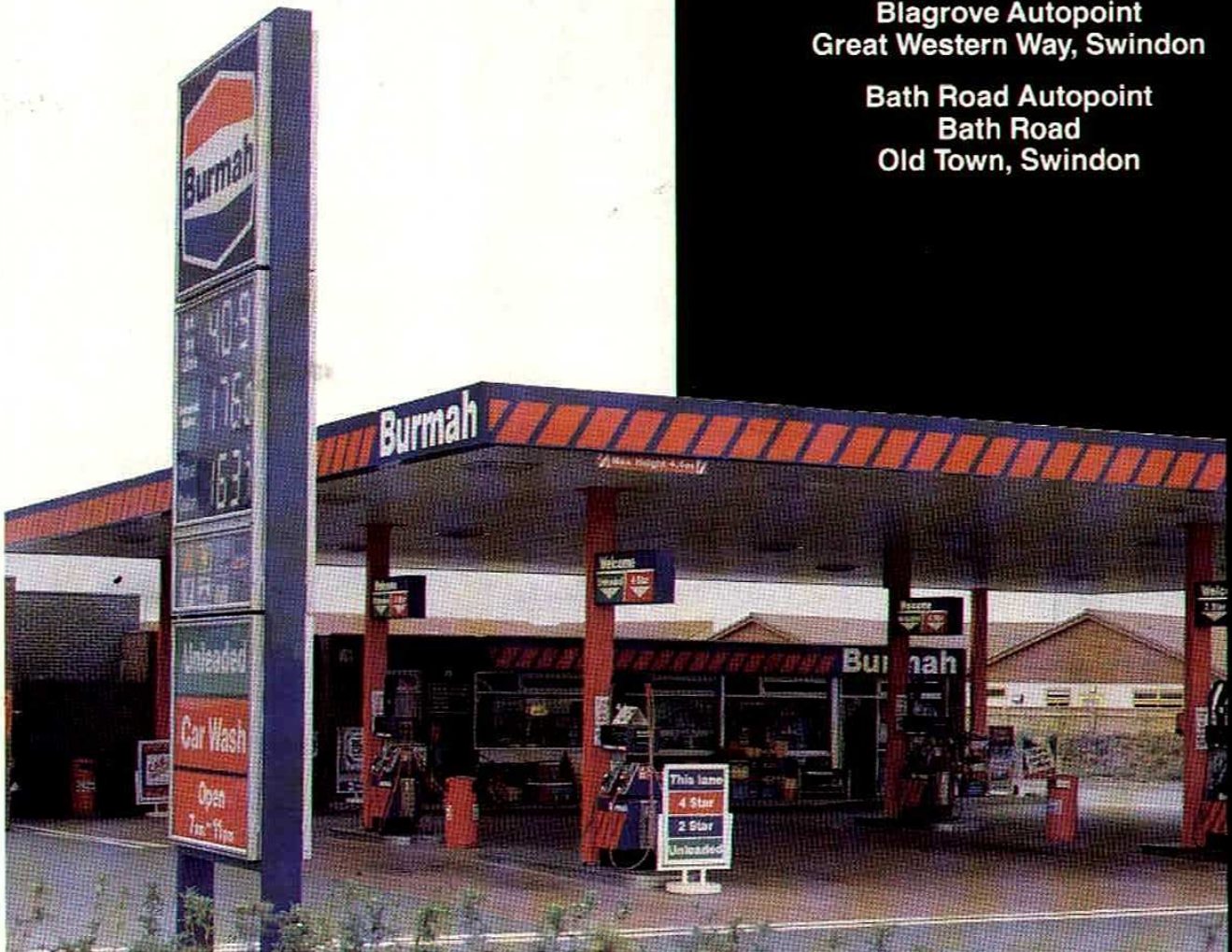
Newport Street Autopoint
Newport Street
Old Town, Swindon

Stratton Autopoint
67 Bridgend Road
Stratton St Margaret, Swindon

St. Margarets Garage
Highworth Road
Stratton St. Margaret, Swindon

Blagrove Autopoint
Great Western Way, Swindon

Bath Road Autopoint
Bath Road
Old Town, Swindon



Look out for the Burmah
Footballs kicked into the
crowd at every home match!



Football can damage your health

So the long journey starts all over again.

During the summer Dr. Howard Thomas put into words what we loyal supporters have known for years – that following Swindon Town F.C. affects your health!

My present chiropractor, treating aching muscles and a stiff neck, explained: “Long-standing emotional stress when the muscles are continually tight can alter neck alignment and function.”

After 46 cliffhangers perched on the edge of our seats, we know what he means.

And here we all are, facing the pain, frustration and disappointment all over again.

It's great, isn't it!

Our opponents today, Ipswich Town, are a side that I expect to enjoy an extremely successful season.

Last season there was a considerable talent in the side, but, with respect to John Duncan, something was missing.

My guest at tonight's game is a fanatical Ipswich supporter, Arthur Boyd-Rochfort. Arthur is the step-brother to the eight-times Champion racehorse trainer, Henry Cecil, and a successful breeder in his own right.

Arthur, his son Jamie, Julie Cecil and her son Noel, are regular visitors to Portman Road.

The interest was reciprocated in the early 80's. Paul Mariner, Eric Gates and Alan Brazil were just three of Bobby Robson's squad who were always welcome at Warren Place stables.

All three remain regular racegoers at Newmarket. I saw 'Gatesy' at the July meeting.

“You must be really choked”, he exclaimed. “Your boys played us off the Park at Wembley and there's Sunderland in Division 1. What a travesty!”

Eric, having intended to retire, has accepted an offer to play for Clive Middlemass at Carlisle United.

“It's only an hour from where I live in Yorkshire, and I'm not expected to train with the lads, so we'll give it a whirl.”

'Gatesy' can still turn a game, as Newcastle United found to their cost in the second leg of the semi-final play-off . . .

By the time these notes are published, we will have opened the new campaign against Charlton Athletic.

I have an affection for Charlton. Their Chairman, Roger Alwen, is a great racing enthusiast, and owns a number of horses with the prefix 'Yeoman' trained by Josh Gifford.

One of their directors, Derek Ufton, the former Kent cricketer, and Charlton and England footballer, is a personal friend.

Derek is now President of the Lords Taverners, for whom I am occasionally privileged to play cricket.

In a match against the East Kent XI at King's College, Rochester, Derek invited a Charlton squad of Lennie Lawrence, Andy Jones and Steve Gritt to play for the Taverners. Steve Gritt, who plays for Hampshire 2nd XI is an extremely accomplished all-rounder, but Lennie Lawrence missed *two* simple stumpings off my bowling, while Andy Jones bowled two of the most

JOURNALIST, RACING COMMENTATOR AND SWINDON TOWN FAN JULIAN WILSON GIVES HIS PERSONAL VIEW



Julian Wilson

expensive overs ever recorded!

I hope they were equally profligate last Saturday!

The World Cup has drifted into the mists of memory, but the enthusiasm engendered should certainly overlap into the new season.

It was bitterly disappointing for England to lose as they did. However, doubtless I was not alone amongst Swindon supporters in viewing with amused irony the hysterical and occasionally alarming reaction of the televiewing England support.

Even normally detached women were affected. Perhaps now they understand why occasionally we kick the dog on a Saturday night!



FM 97.2

**SWINDON TOWN,
IT'S OUR TEAM**

McLEAN HOMES. BUILDING FOR EVERYONE'S FUTURE

McLean's superbly built homes are ideal for
the 1990s.

Whether it's a 1-bed starter apartment, or a
magnificent 4-bed executive home, the quality
is outstanding.

And we'll keep building for everyone's future,
right into the 21st century.

McLean
CREATIVE BUILDERS

McLean Homes South West Limited, Omicron, Windmill Hill Business Centre,
Swindon, Wilts. SN5 9YU. Tel: (0793) 874700.



WALKER JACKSON

IVECO
Ford
TRUCK



Get a fresh start to motoring this season

ALL PRICES
ARE
INCLUSIVE
OF VAT

Check Ford First.

A 4.546 LITRE CAN 10/30, 20/50, OR 15/40 SF/CD
MULTIGRADE FORD OIL PLUS FILTER
TO FIT FORD KL, OHC, BL AND V
ENGINES, ALSO SOME ALFA-ROMEO,
FIAT, LADA, LANCIA, PEUGEOT,
RELIANT, RENAULT, SAAB, TALBOT,
TOYOTA AND VOLVO ENGINES

TECHNOLOGY TELLS...
NEW SUPER COPPER
CORE SPARK PLUGS
FROM MOTORCRAFT

£4.00

(SET OF 4 - INCLUDING VAT)



£6.50

INC. VAT

OPEN ALL DAY SATURDAY

ALL PRICES INCLUDE VAT



Walker Jackson & Co. Limited
CAR PARTS
Marlborough Road
Tel: Swindon 695702

Walker Jackson & Co. Limited
VAN AND TRUCK PARTS
Coped Hall, Wootton Bassett
Tel: Swindon 850225

PARTS CENTRE
OPEN SIX DAYS A WEEK
Monday to Friday
8 am - 6 pm
Saturday 8.30 am - 5 pm
PARTS CENTRE
OPEN SIX DAYS A WEEK
Monday to Friday
8.30 am - 6.30 pm
Saturday 8.30 am - 3.30 pm

It's the Town End

GRAHAM CARTER investigates as the County Ground moves one step closer

If we needed any proof that things would never be the same again after Hillsborough, we got it tonight. Fifty two years and one day after it was first opened, the Town End has sprouted seats.

It's happening all over the country – at such a rate that the demand for seats delayed the start of work on the Town End. Indeed, the club has been locked in a desperate battle against time to have the seats installed for the first games of the season.

The same installation team working on the Town End has also been working on Yeovil Town's new ground during the summer.

Work on the Town End is only the first step towards the all-seater stadia recommended by the Taylor Report last January. Division 1 and 2 clubs have until the beginning of the 1994/95 season to make their grounds all-seater.

Conversion of the Town End will cost in the region of £25,000 – some of which will be met by a grant from the Football Grounds Improvement Trust.

As for the rest of the Ground – the Shrivenham Road stand and Stratton Bank are both part of long-term plans on which decisions are still to be made.

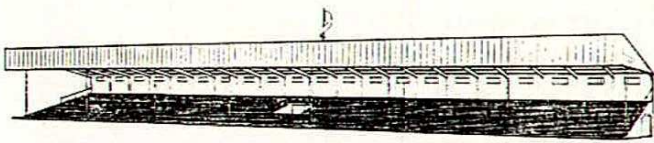
These will be major projects as the club strives to regain and retain First Division status and the plans also include a review of the front of the North Stand.

At the same time as installing the soon-to-be compulsory seats, it has also been decided, after a request from the police, to allocate the stand to visiting supporters. Escorting fans to and from the ground will be easier from now on. So there are two reasons why we've come to the end of an era tonight.

The Town End stand was opened on August 27th, 1938 – the first day of the last full season before the war and only three months after the decision to build it had been made.

It cost £4300 to build and was financed by the Supporters Club – even though £2800 was still to be raised when it was opened by Swindon's MP, Wavell Wakefield. He said the stand was "an achievement which would be of lasting benefit to Swindon football".

238 feet long, the stand has 31 steps, each four inches high, so that the back row step is 11 feet higher than the front row. Though designed by architects from Bristol, it was built by the Swindon firm, Spackman and Son.



The architect's drawing of the Town End stand, drawn in 1938.

Town End of an era

as the County Ground moves one step closer to becoming an all-seater stadium



The stand must have inspired the team because the first game the team played in front of it saw The Town beat Notts County 4-1 in what the Evening Advertiser called 'a rattling good game'.

A crowd of over 13,000 watched that Division 3 South game and a measure of how concern over ground safety has changed since then is that the stand at the Town End (or the Hotel End as it was more commonly called) was originally designed to accommodate up to 7000 people. Last season, the limit was just 2125.

For years the Town End was where most of the noise was generated by the crowd as it became Swindon's 'Kop'. Many will swear that The Town played better when attacking that end of the ground and scored more goals.

But recently the Town End's popularity has waned – even to the point where it has to compete with the Shrivenham Road stand as the chief source of vocal support. The Town also no longer automatically attack the Town End in the second half if they win the toss – as they apparently used to – and many of the players now prefer to kick towards Stratton Bank.

All this is borne out by statistics kept by the club

historian, Paul Plowman. His figures show that in our Fourth Division Championship season (1985/86) the Town scored 33 goals at the Town End, but only 26 at Stratton Bank. That seven goal difference was down to three a year later, and, in 1987/88, the tallies had levelled. 1988/89 saw only 16 at the Town End, compared to 23 at Stratton Bank and last season the trend seemed to be continuing – 32 at the Town End and 33 at Stratton Bank.

But even if The Town were to never score another goal at the Town End, there would still be hundreds of fans who would be disappointed that they will now have to watch the match from elsewhere in the ground.

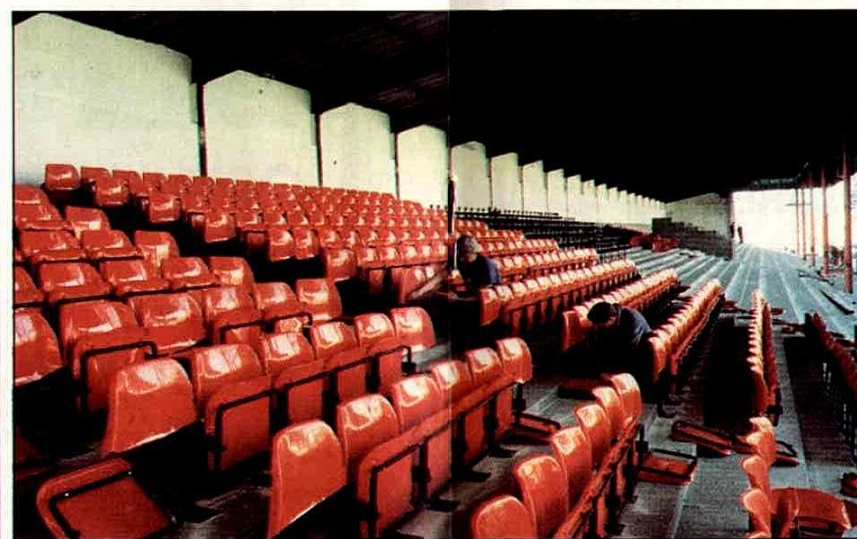
Just as when Stratton Bank was allocated to away supporters, forcing out its regulars, emotions are bound to be stirred by new arrangements. Traditions die hard. In football, they seem to die harder.

The Town's new Chief Executive, Peter Day, said he felt some sympathy for the Town End regulars. "I like to stand on the terraces myself for a few games each season," he said.

"That's the only way to find out what it's like. I can well understand that anybody who has stood there week in, week out, for years, could feel upset."

Clearly, it would be impossible to satisfy everybody – not to mention strict safety regulations – all the time, but they would all surely agree on one thing.

This is only the beginning of a period of change that will profoundly affect not just Swindon Town – but the rest of football in this country too.



← Top: Take a last look . . . the Town End before the seats went in.

Bottom: Please take your seats . . . workmen install the first of the seats.

AKERS GARAGE LTD.

MAIN VAUXHALL CAR AND LIGHT COMMERCIAL DEALER

VAUXHALL - VAUXHALL - VAUXHALL - VAUXHALL

CAR/VAN SALES NEW & USED
Service Department M.O.T. Testing Station
BODY & PAINT REPAIR SHOP
Genuine Vauxhall Spares
SELECTION QUALITY USED VEHICLES

VAUXHALL - VAUXHALL - VAUXHALL - VAUXHALL

AKERS

YOUR LOCAL VAUXHALL CAR AND LIGHT COMMERCIAL DEALER

THE STREET, MOREDON, SWINDON SN2 3ES

Tel: (0793) 523457/8/9



VAUXHALL

SERVICE - PARTS - SALES - SERVICE - PARTS - SALES - SERVICE - PARTS - SALES - SERVICE



SILVER KNIGHT

THREE LEVELS OF SERVICE
TO CATER FOR ALL NEEDS

- ★ VIP EXECUTIVE ★
- ★ LUXURY ★
- ★ GENERAL/CONTRACT ★

UK and CONTINENTAL CHARTER for BUSINESS and PLEASURE

All Silver Knight Coaches are of a high standard
You will receive the same efficiency whichever you choose

For our VIP/Executive service,
our drivers wear tailormade suits to fit the occasion

Your comfort will be guaranteed with

Reclining Seats - Curtains - Tables - Toilet/Washroom - Hot/Cold Drinks
Fridge - Servery/Bar - Video - Telephone - Hostess/Guide

Silver Knight Coaches Ltd., Christian Malford, Chippenham, Wilts. SN14 5BH
Telephone: (0249) 720369

FOR COACH TRAVEL SUPREMACY

Reserves & Youths

SWINDON TOWN

| FOOTBALL COMBINATION FIXTURES | |
|-------------------------------|----------|
| Wednesday August 29th | |
| Reading | A 2.00pm |
| Wednesday September 5th | |
| Wimbledon | H 7.00pm |
| Wednesday September 15th | |
| Arsenal | H 7.00pm |
| Wednesday September 26th | |
| Oxford United | A 7.30pm |
| Saturday October 6th | |
| Ipswich Town | A 3.00pm |
| Wednesday October 10th | |
| Portsmouth | H 7.00pm |
| Wednesday October 17th | |
| Norwich City | H 7.00pm |
| Wednesday October 24th | |
| Watford | H 7.00pm |
| Saturday October 27th | |
| Tottenham Hotspur | A 2.00pm |
| Wednesday October 31st | |
| Ipswich Town | H 7.00pm |
| Wednesday November 7th | |
| Brighton & Hove Albion | H 7.00pm |
| Saturday November 10th | |
| Arsenal | A 3.00pm |
| Tuesday November 13th | |
| Chelsea | A 2.00pm |
| Thursday November 22nd | |
| West Ham United | A 7.00pm |
| Wednesday November 28th | |
| Luton Town | H 7.00pm |
| Saturday December 1st | |
| Southampton | A 2.00pm |
| Tuesday December 4th | |
| Watford | A 7.00pm |
| Wednesday December 12th | |
| Fulham | A 2.00pm |
| Wednesday December 19th | |
| Chelsea | H 7.00pm |
| Friday December 28th | |
| Norwich City | A 7.30pm |
| Wednesday January 9th | |
| Reading | H 7.00pm |
| Tuesday January 15th | |
| Charlton Athletic | A 7.00pm |
| Wednesday January 23rd | |
| Southampton | H 7.00pm |
| Wednesday January 30th | |
| Oxford United | H 7.00pm |
| Tuesday February 5th | |
| Queens Park R. | A 2.00pm |
| Wednesday February 13th | |
| Crystal Palace | A 7.30pm |
| Wednesday February 20th | |
| Queens Park R. | H 7.00pm |
| Wednesday February 27th | |
| Tottenham Hotspur | H 7.00pm |
| Wednesday March 6th | |
| West Ham United | H 7.00pm |
| Saturday March 9th | |
| Luton Town | A 3.00pm |
| Wednesday March 20th | |
| Fulham | H 7.00pm |
| Monday March 25th | |
| Millwall | A 2.00pm |
| Wednesday April 3rd | |
| Charlton Athletic | H 7.00pm |
| Wednesday April 10th | |
| Crystal Palace | H 7.00pm |
| Wednesday April 17th | |
| Brighton & Hove Albion | A 7.15pm |
| Saturday April 20th | |
| Portsmouth | A 2.00pm |
| Wednesday April 24th | |
| Millwall | H 7.00pm |
| Tuesday April 30th | |
| Wimbledon | A 7.30pm |

SOUTH EAST COUNTIES

| LEAGUE FIXTURE LIST 1990-1991 | |
|-------------------------------|----------------|
| Saturday August 25th | |
| Brighton & Hove Albion | A |
| Saturday September 1st | |
| Bristol Rovers | H |
| Saturday September 8th | |
| Luton Town | A |
| Saturday 15th September | |
| Southampton | A League Cup 1 |
| Saturday 22nd September | |
| Southampton | A |
| Saturday 29th September | |
| Crystal Palace | H |
| Saturday October 13th | |
| Maldstone United | H |
| Saturday October 20th | |
| Southampton | League Cup 2 |
| Saturday October 27th | |
| Reading | A |
| Saturday November 3rd | |
| Oxford United | H |
| Saturday November 10th | |
| Wimbledon | A |
| Saturday November 17th | |
| Aldershot | H |
| Saturday November 24th | |
| Tottenham Hotspur | H |
| Saturday December 1st | |
| A.F.C. Bournemouth | H |
| Saturday December 8th | |
| Bristol City | H |
| Saturday December 15th | |
| Southampton | League Cup 3 |
| Saturday December 22nd | |
| Brentford | A |
| Saturday January 5th | |
| Brighton & Hove Albion | H |
| Saturday January 12th | |
| Bristol Rovers | A |
| Saturday January 19th | |
| Luton Town | H |
| Saturday January 26th | |
| Southampton | H |
| Saturday February 2nd | |
| Crystal Palace | A |
| Saturday February 16th | |
| Maldstone United | A |
| Saturday February 23rd | |
| Reading | H |
| Saturday March 2nd | |
| Oxford United | A |
| Saturday March 9th | |
| Wimbledon | H |
| Saturday March 16th | |
| Aldershot | A |
| Saturday March 23rd | |
| Tottenham Hotspur | A |
| Saturday March 30th | |
| A.F.C. Bournemouth | A |
| Saturday April 6th | |
| Bristol City | A |
| Saturday April 13th | |
| Brentford | H |

On The Road to Hull City

Saturday September 8, 3 p.m

ROUTE

Hull is 206 miles from Swindon. Take A361 via Burford, Chipping Norton, Banbury and Daventry, joining M1 at junction 17. Take M18 at junction 2, then M180 and follow signs for Humber Bridge (toll). Take 2nd exit at roundabout (A63) towards Boothferry Road, 1½ miles away.

PARKING

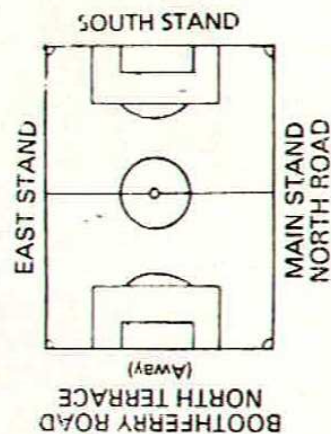
There is limited parking at the ground, plus street parking.

DISABLED

Wheelchairs accommodated (but no disabled toilets).

OTHER DETAILS

Nearest railway station is Hull Paragon (1½ miles). Club phone number (0482) 51119 for ticket information.





SWINDON TOWN FC FIRST TEAM SQUAD OF PLAYERS FOR SEASON 1990-91

Back row left to right: Liam Dixon, Adrian Viveash, Fraser Digby, Nicky Hammond, Steve White and Tony Galvin.
Middle row left to right: Andy Rowland (Coach), Tony Clarke, Dave Hockaday, Tom Jones, Ross MacLaren, Jon Gittens, Fitzroy Simpson, Paul Bodin, Greg Costello and Chic Bates (Assistant Manager).
Front row left to right: Neil Tomlinson, Paul Hunt, Steve Foley, David Kerslake, Ossie Ardiles (Manager), Colin Calderwood, Alan McLoughlin, Shaun Close, Paul Trollope and Nicky Summerbee. (Duncan Shearer absent).

FRED FACTOR



BARCLAYS COMMERCIAL SERVICES

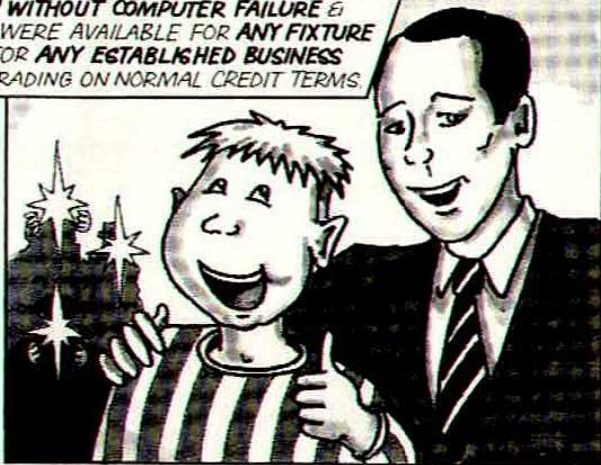
AFTER MAGNIFICENT PLAY IN COLLECTIONS, CREDIT CONTROL & CLIENT MANAGEMENT.

IT WAS A TOUGH FIRST HALF AGAINST DEBTORS UNITED, BUT FRED'S SKILL & EXPERIENCE WITH THE BCS DEFENCE GUARANTEED A SALES LEDGER IN FIRST CLASS ORDER & 100% PROTECTION FROM BAD DEBTS. THE CAPACITY CROWD AT AQUILA ROAD WERE ON THEIR FEET!



... BCS WENT ON TO MAKE AN 80% IMMEDIATE AVAILABILITY OF CASH TO THE CLIENT.

AFTER THE VICTORY, BRIAN WOOD, TEAM MANAGER, STRESSED THAT THIS WAS A TYPICAL TEAM GAME. FRED FACTOR & BCS PLAYED 365 DAYS A YEAR, WITHOUT HOLIDAYS WITHOUT COMPUTER FAILURE & WERE AVAILABLE FOR ANY FIXTURE FOR ANY ESTABLISHED BUSINESS TRADING ON NORMAL CREDIT TERMS.



 **BARCLAYS**
COMMERCIAL
SERVICES +++

FOR FULL DETAILS ON FACTORING:
FRED FACTOR, BARCLAYS COMMERCIAL SERVICES LTD, AQUILA HOUSE, BREEDS PLACE HASTINGS, EAST SUSSEX TN34 3DG
TEL: (0424) 430824 FAX: (0424) 427322 TELEX: 95450

OVER 100 CARS TO
CHOOSE FROM - LATEST
MODELS AVAILABLE.
SALOONS, HATCHBACKS,
ESTATES, AUTOMATIC,
SPORTS, PRESTIGE CARS

- RADIOS
- CHILDSEATS
- ROOF RACKS
- & TOW BARS

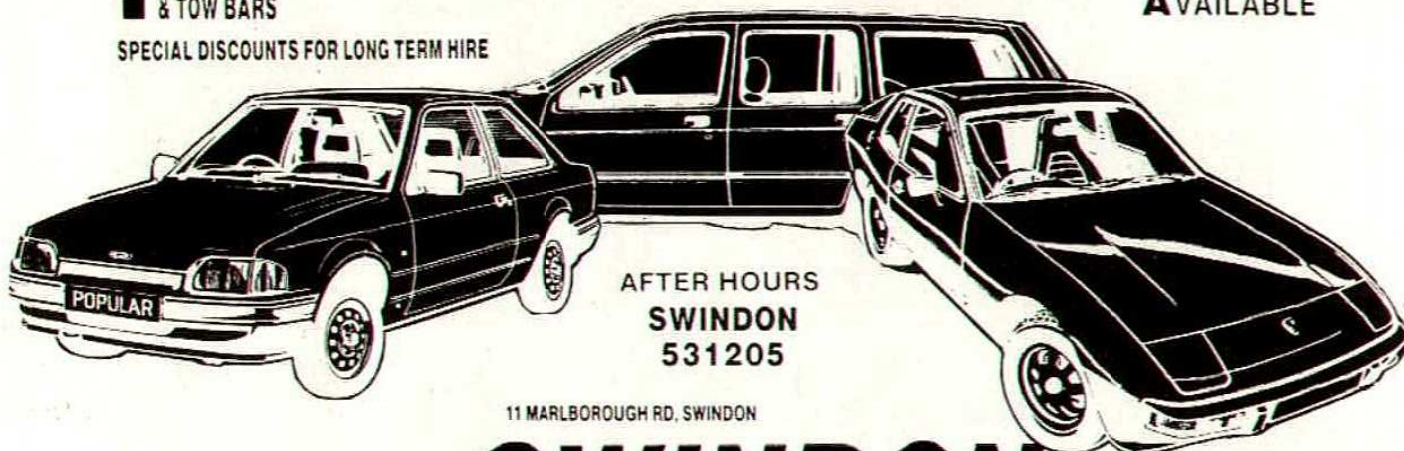
SPECIAL DISCOUNTS FOR LONG TERM HIRE

DELUXE CAR HIRE

FULL AA RELAY
COVER

NO MILEAGE
CHARGE

DELIVERY &
COLLECTION
AVAILABLE



AFTER HOURS
SWINDON
531205

11 MARLBOROUGH RD, SWINDON

NO HIDDEN EXTRAS
WE QUOTE ALL IN
PRICES

OPEN 7 DAYS A WEEK

SWINDON 644996



BAMPTONS



STRATTON ROAD,
SWINDON,
WILTSHIRE.

TEL: (0793) 35547/8/9

Approved by Major Insurance Companies



Motor
Agents Association

Everton dominate all-English friendly

Irish Times 6.8.90

EVERTON.....2
SWINDON TOWN.....1
 EVERTON got the victory everyone expected from this unusual pre-season friendly with English second division side Swindon Town in the warm sunshine of Tolka Park last evening before a crowd of roughly 5,000, writes **DEREK JONES**.

It was quite clear from the start that Everton, while not exactly creating a heart-throbbing atmosphere, were in a higher gear and they should have won with a little more to spare.

They would have done so but for Swindon goalkeeper Fraser Digby who had a night of overtime compared with his opposite number, Neville Southall. And Mike Newell committed the offence of the match.

BRAY WANDERERS.....0
SWINDON TOWN.....2

PAT DEVLIN'S brave Bray Wanderers gave a good account of themselves in the build-up to their forthcoming European Cup Winners Cup tie later in the month when losing narrowly to Ossie Ardiles's Swindon Town at the Carlisle Grounds last night.

Bray started confidently, and their skipper Dermot Judge grazed the Swindon crossbar with a thumping drive from 35 yards in the 11th minute.

However, Swindon found their feet gradually, and took a 31st minute lead when David Kerlake broke from midfield, running onto a clever throughball from Ross McLaren to shoot low past Josh Moran in the Bray goal.

Swindon's professional fitness told as the second half wore on, and they got their second goal in the 66th minute when Shaun Close slid the ball home off a post from Roger Jones cross.

BARRY ROCHE profiles young Republic of Ireland midfielder Alan McLoughlin who appears at Musgrave Park tonight where his club Swindon Town meet Cork City in a pre-season friendly.

The subject of interest from Jack Charlton and his assistant Maurice Setters from the time he established himself as a regular in the Swindon side, McLoughlin's goalscoring feats — he had notched 16 by early March this year — had brought him into contention for an Ireland "B" cap and manager Ardiles supported his case for an international call-up with some high praise.

"Any midfield player that can score as regularly as Alan can, must be an asset to the team and while he operates in the centre of midfield for us, he is capable of playing on either flank. The step from club football to the international stage will be difficult but I think he can handle it."

Two weeks later McLoughlin lined out in an

"He's a very busy little player" observed Charlton of the Swindon player "he sees things, he supports people, he's got bundles of energy and he runs at defences just like Ray Houghton".

The comparison with Houghton was to

Joining the Irish party at the eleventh hour as cover for Houghton, McLoughlin was to savour the thrill of playing in the World Cup when 64 minutes into the England game he replaced John Aldridge and was on hand to watch Kevin Sheedy drill home that glorious equaliser.

Six days later, he again got the nod from Big Jack, again coming on for Aldridge in the 64th minute, this time in the far less satisfying 0-0 encounter with the Egyptians.

Although that game was to mark the end of McLoughlin's involvement in Italia 90, it is likely to prove but the beginning of an international career which if it follows his club career to date, could well lead to a healthy goals plus total for the Republic and with it the prospect of further World Cup appearances for the young Swindon midfielder.

A Personal Message from Gary Herbert

Welcome back to the County Ground after the trauma of the summer.

I would like to thank you all for the tremendous support and loyalty you have shown the club in the past difficult months. Whilst we cannot change the events of the summer to restore our hard won 1st Division status it is an absolute certain fact that it was the concern that was shown by so many people (some not even involved in football) that led the Football Association Appeal to restore us to 2nd Division football. At the Football Association Commission, our legal team headed by Q.C. Mr. Beloff managed to convert the thoughts and feelings of the total injustice felt by all the

people that were involved in the family walk and the other numerous events that took place in that short space of time. With the thousands of letters sent to the Football Authorities I am convinced that this all had a tremendous bearing on the decision that was reached that day.

We are very fortunate at the County Ground that we have a first class manager and one of the best first team squads ever assembled at Swindon.

What we are attempting to do is to get the same sort of quality both on the Board of Directors and in the administration. The appointment of a Chief Executive (Peter Day) and a Supporters Representative (Martin Tryczynski) on the

Board, are two steps towards these aims.

You, the fans, have shown what is possible when everybody pulls together for the same aims and we will make absolutely sure in the future that you are not let down again.

The football club still has problems to resolve but we can only deal with them as and when they arrive.

The attitude at the County Ground is extremely positive for the future. Any supporters who feel they can help or contribute to our future success are very welcome to make contact with myself or Martin Tryczynski.

It will be nice to return this evening to the important part of football – playing!

Thank you all very much for your support!

**YOU SUPPLY THE TALENT
MITRE SUPPLY THE REST !**



F O O T B A L L



**MITRE ARE THE SOLE MANUFACTURER & SUPPLIER TO THE ENGLISH FOOTBALL LEAGUE
OF THE EXCLUSIVE DELTA DESIGN OFFICIAL MATCH BALL.**

Kit Sponsors

ADRIAN VIVEASH

Raynor and Sons
Vehicle Dismantlers
Broad Town, Swindon
Tel: Swindon 863715

NICKY HAMMOND

Modular Marquees
(06667) 246
and
Mr Jonothan Powell

DAVE HOCKADAY

Mr and Mrs Tucker of Seend
Mr Piper and Friends, Swiss Chalet
Mr and Mrs Fisher, Birdcome Walk
Bryant School of Motoring: 823421
Colin Aldridge, The Dormers, Highworth



TOM JONES

"I bet he drinks
Carling Black Label"



JON GITTENS

Wessex
Conservatories

ROSS MACLAREN

John Tremlin, Coped Hall Service Station
Terry Wollen, Wollens Off Licence
Jenco Industrial Services
Lynne Stevens, Epping Close, Warminster
Rebecca Vockins, Priory Green, Highworth

ALAN McLOUGHLIN

John Harris, Westcott Place Post Office, Swindon
Martyn Smith, Minchinhampton, Gloucester
Keith Chilcott, 34 Ash Walk, Warminster
Sandra Coburn

KEVIN MORRIS

Geoff James of Banbury
Mr Maurice Earle
Jenco Industrial Services

FRASER DIGBY

Mr and Mrs Fisher, Birdcome Walk, Swindon
Mrs Chilcott, 34 Ash Walk, Warminster
The Brown Family, Carterton
Alexander Services
S.T.F.C. Skittles Team, Top Cue, Stonehouse

STEVE FOLEY

Mrs Chilcott, 34 Ash Walk, Warminster
G. Mulcahy, Wills Club, Swindon
R. and J. Warren of Lambourne
Jenco Industrial Services
Jason and Duncan Malcome of Bulford Village

TONY GALVIN

The Robins Out Of Town

OSSIE ARDILES

Swindon Supporters in London
Contact:
Nick Coote 081-828 1437
Paul Donkersley 081-870 0316
David Moulard 081-347 9845

NICKY SUMMERBEE

Sir Seton Wills

SHAUN CLOSE

Compton Welding, Purton 770742
V.G. Newman, Lea, Malmesbury
John Ward, New Farnley, Leeds
Tudor Carpets, Seymour Road, Swindon
Jefferies D.I.Y., High Street, Highworth

PAUL BODIN

Hain and Smith
Opticians
Marlborough, Swindon, Highworth

COLIN CALDERWOOD

Jenco Industrial Services
Mr and Mrs Peet, White Hart, Oare
Mr Tim Barnes, Ashton Keynes
R. and K. Owen, Friesian Close, Swindon
Roland, Nigel and Sam Jones with Peggy Postma

DAVID KERSLAKE

Mr K. P. Emms
Mary Hewer Take Away
Groundwell Road
Swindon

DUNCAN SHEARER

Bassett Bookmakers

FITZROY SIMPSON

Clare Catering of Oxford

STEVE WHITE

Multisets
For all Computer Stationery
Tel: (0793) 729500

PAUL HUNT

TS TYPESETTING
Typesetters of the official
S.T.F.C. matchday programme
Tel: (0793) 618505

ANDY ROWLAND

R. K. Owen, Friesian Close, Swindon
Chris Weavers, Haydon Court, Swindon
Jenco Industrial Services
Andrea Pegler and Hilary Mahoney
The Old Vicarage, Kempsford

JOHN TROLLOPE

Nationwide Anglia Building Society



CHIC BATES

Julian Wilson

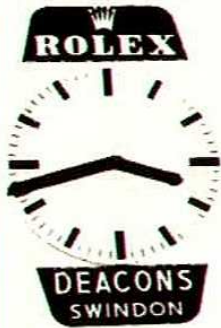
FM 97.2

FOR SPORT, NEWS, INFORMATION AND
ENTERTAINMENT 24 HOURS A DAY, CALL
THE GWR RADIO LINE ON 0898 333000

Calls charged at 38p/min peak/25p/min all other times

THE UNBEATABLE TEAM

DEACONS



PLUS

ROLEX

**SALES
& SERVICE**



DEACONS

(Established 1848)

11-13 WOOD STREET, SWINDON

Tel: 522072 and 527530

23 MARKET PLACE, TETBURY Tel: 52766



Hulford

Motors Ltd

SELF DRIVE HIRE SPECIALISTS
FOR OVER 30 YEARS

**CAR &
VAN HIRE**

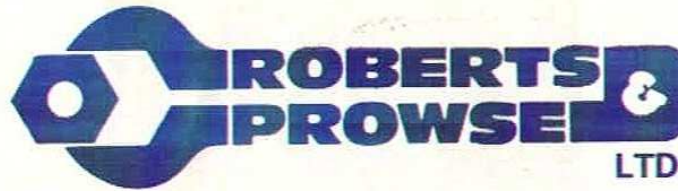


SPECIAL LOW LONG WEEKEND RATES



SHRIVENHAM ROAD, SWINDON

534934 & 524839



**SPECIALISTS IN
LTD.**

*Process Pipework and Plant, Building Mechanical Services,
Industrial Fabrication, Sheet Metalwork, Combustion Services, Thermal Insulation,
Asbestos Removal, Engineering Merchants, Development Engineers*

**THORNHILL, SOUTH MARSTON, SWINDON SN3 4TA.
TELEPHONE (0793) 825505 FACSIMILE (0793) 822642**



CASTLE'S

Office and Bakery

4 and 5 MARKET STREET SWINDON

Telephone 522017

Specialists

Wedding Cakes, Birthday Cakes.

Try our Wholemeal Bread and

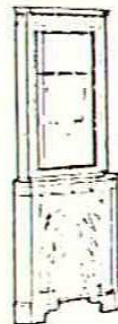
Wiltshire Lardies and

Delicious Dairy Cream Cakes

ELEGANT

Reproduction Furniture

**Luxury . . .
you can afford**



Qualities to suit all tastes . . .

Prices to suit all pockets . . .

Come and see for yourself at . . .

Howell's

Reproduction Furniture & French Polishing Specialists
52, DEVIZES ROAD, OLD TOWN



Swindon. Tel: 535658



TRANSPLANT

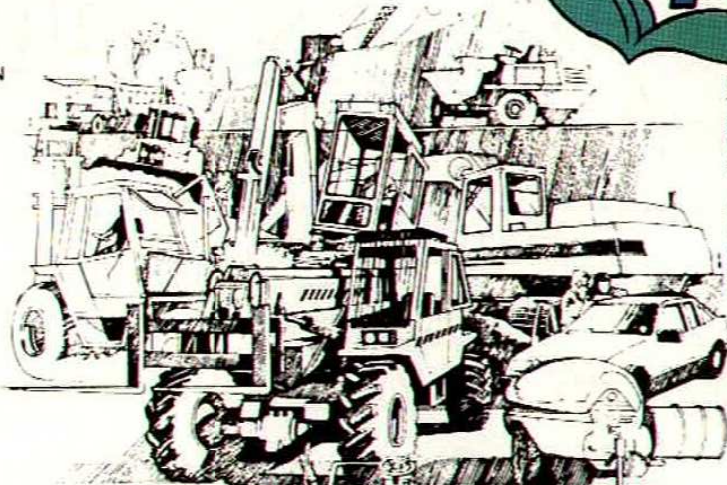
CONSTRUCTION MACHINERY RENTAL



Reading Depot:
Transplant Limited,
Toutley Works, Toutley Road,
Wokingham, Berkshire RG11 5QN
Tel: Reading (0734) 786278
Fax: (0734) 792820

South Coast Depot:
Unit 10, Fort Fareham Ind. Est.,
Newgate Lane, Fareham,
Hampshire PO14 1AH
Tel: Fareham (0329) 822453
Fax: (0329) 822502

**NEW
SOUTH COAST
DEPOT**



Bristol Depot:
Transplant Limited,
Emery Road, Brislington Trd. Est.,
Bristol BS4 5PF Tel: (0272) 779211
Fax: (0272) 711559

Swindon Depot:
Gipsy Lane,
Swindon
Tel: (0793) 542266
Fax: (0793) 731600

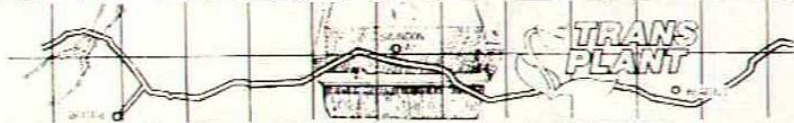
BULK EXCAVATIONS
Six and Eight Wheel
Hinos. Hire on Daywork
or Priced Basis.

POWERED AERIAL ACCESS EQUIPMENT

These items may be hired from any of our depots, but for specialist advice contact our Manager

Alf Down - Tel: (0480) 76291 Car Phone: (0836) 314952

THE FORCE IN PLANT HIRE



Head Office and Accounts Telephone: Swindon (0793) 731741

WALKER JACKSON

**Motoring...
we're on the
ball!**



We're with you all the way!

Car Sales
Fleming Way
Roundabout
Tel: Swindon 20002

Car Service & Parts
Marlborough Road
Tel: Swindon 20002

Commercial Sales Service Parts
Coped Hall, Wootton Bassett
Tel: Swindon 853344



 A Member of the Normand Group of Companies

Ten sound reasons for choosing a Wessex Conservatory.

Acknowledged experts: unbeatable quality. 1

Sturdy, durable: precision-engineered frame. 2

Superb choice of single or double glazed. 3

With toughened glass for extra safety. 4

Designed just the way you want it. 5



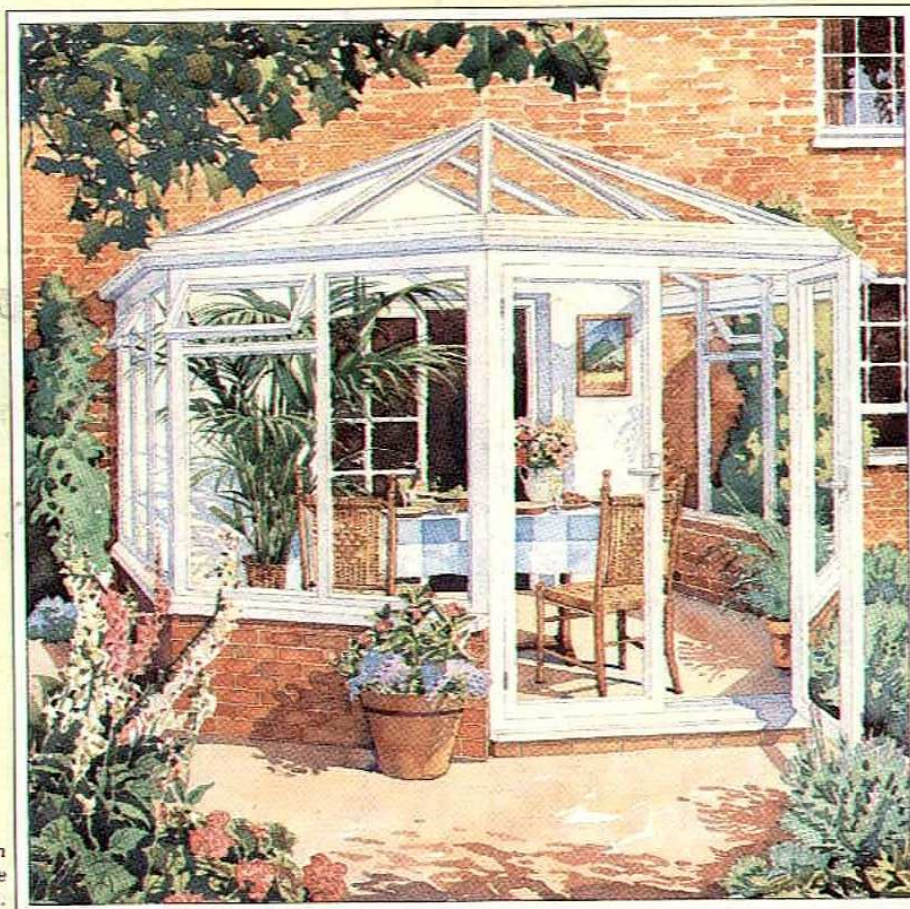
6 Clear-Shield easy-clean glass protection.

7 Planned and installed by trained personnel.

8 Super choice of blinds and other options.

9 Security locks and fittings standard.

10 Comprehensive 10 year Guarantee.



Available in
Classic White
or Havana Brown.

WESSEX CONSERVATORIES

Founder member of the Conservatory Association.

For free 20 page colour brochure send this coupon to:

Wessex Aluminium Ltd., Hawksworth, Swindon,

Wilts. SN2 1DZ

Or PHONE (0793) 644633

Please send me your FREE 20 page colour brochure
and details of my nearest Wessex dealer.

Name

Address

Phone No Ref. STFC



Colin Calderwood

- Colin lives in Stratone Village, Stratton with his wife Karen, whom he married in 1989. They have a dog called Bella.
- His nickname is 'Fridge'.
- He was born in Glasgow, but went to school in Stranraer.
- Stranraer's Stair Park was the first football ground he visited, but he was also a Rangers fan.
- When today's match is over he will be most anxious to hear the results of Sunderland's and Stranraer's matches.
- The last match that he paid to watch was a UEFA Cup tie between Nottingham Forest and Celtic in 1984.
- He turned professional at age 16 and made his debut in the first team the following March, aged 17 years and 2 months.
- After signing for the Town in Jun 1985, he played in 157 consecutive League and Cup games.
- Apart from P.E., his other favourite school subjects were Home Economics and Accounts. His least favourite subject was Biology.
- He left school with 6 'O' Levels.
- Golf and gardening are his two hobbies. In fact, he is the Nick Faldo of Swindon Town, with a handicap of 10.
- During the close season he likes to relax, play golf and tennis, and visit his parents in Scotland.

- 'My Way' by Frank Sinatra is his favourite song. He also enjoys listening to Simple Minds and Level 42.
- 'Rain Man', starring Dustin Hoffmann and Tom Cruise is his favourite film.
- If he was a Swindon supporter, he would watch matches from the Shrevenham Road terraces.
- He prefers it when the Town are kicking towards Stratton Bank.
- Of all the League grounds he has played on, Oldham Athletic's Boundary Park is his least favourite.
- He once played in goal for Mansfield Reserves against Middlesbrough Reserves and saved a penalty – but ended up letting in five goals in a 0-5 defeat.
- His first senior goal was in an F.A. Cup tie for Mansfield against Doncaster in November 1983. He hasn't scored in the F.A. Cup since.
- He considers that his best ever goal was the one he scored against Port Vale last season – an incredible free kick from near the half-way line which sailed over the goalkeeper's head and into the net.
- He has played in 30 League Cup games, but has yet to score in the competition.
- Dave Hockaday is his roommate on away trips and his closest friend in the team.
- His biggest ambition in football is to play in the First Division.

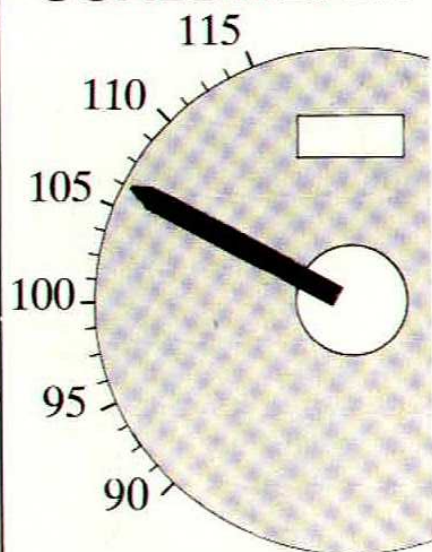


- His wife, Karen, says that he is extremely houseproud and nags her about how he does more housework than she does.
- Franz Beckenbauer, Martin Buchan and Tom Forsyth are his favourite players of the past.
- His three favourite current players are Franco Baresi, Paul Gascoigne and Alan Hansen.
- He has no real superstitions, but does like to get out on to the pitch as early as possible to warm up.
- Fellow Scot Billy Connolly is his favourite comedian.
- Hill Street Blues, Cheers and Blackadder are his favourite TV programmes.
- As mementoes of his career, he keeps a scrapbook, together with shirts, programmes and videos of matches.

Compiled by
BRIAN CARTER

Statistics

GOALOMETER



1989/90 SEASON TOTAL
106 goals

Swindon Town F.C. would like to thank the firms and individuals opposite for sponsoring every first team goal scored in competitive matches during season 1990/91.

SPONSORED GOALS

Lovatt Heating, Cirencester
Abbey Road Garage, Cirencester
M.S. Group, Swindon
Clare Catering of Oxford
Keith Lodge Industrial Roofing
Metalite Engineering
The Riverway Wine Company,
Trowbridge
Swindon Calor Gas Centre, Swindon
Roy Allen Supplies, Swindon
Brunel Scaffolding, Swindon
Regal Windows, Swindon
Skurrays, Drove Road, Swindon
Thamesdown Cleaning Services,
Swindon
Multi Agg Quarries, Shellingford
Les Smith Haulage, Swindon
Moore's Cars, Faringdon
Carling Black Label
Blunsdon House Hotel, Swindon
Starlight Private Hire Cars, Swindon
Western Daily Press
Ashtons Auto's, Swindon
Hammond Construction, Highworth
Sun Ray Heating, Swindon
High Close Soft Fruit, Hungerford
Fisher Roofing, Link House,
Highworth
Biplob Tandoori Restaurants
Swindon, Rodbourne, Highworth
S. Coburn

BARCLAYS LEAGUE DIVISION TWO FINAL TABLE 1989/90

| | P | W | D | L | F | A | Pts | G/D |
|---------------------|-----------|-----------|-----------|-----------|-----------|-----------|-----------|------------|
| Leeds United | 46 | 24 | 13 | 9 | 79 | 52 | 85 | +27 |
| Sheffield United | 46 | 24 | 13 | 9 | 78 | 58 | 85 | +20 |
| Newcastle United | 46 | 22 | 14 | 10 | 80 | 55 | 80 | +25 |
| Swindon Town | 46 | 20 | 14 | 12 | 79 | 59 | 74 | +20 |
| Blackburn Rovers | 46 | 19 | 17 | 10 | 74 | 59 | 74 | +15 |
| Sunderland | 46 | 20 | 14 | 12 | 70 | 64 | 74 | +6 |
| West Ham United | 46 | 20 | 12 | 14 | 80 | 57 | 72 | +23 |
| Oldham Athletic | 46 | 19 | 14 | 13 | 70 | 57 | 71 | +13 |
| Ipswich Town | 46 | 19 | 12 | 15 | 67 | 66 | 69 | +1 |
| Wolverhampton W. | 46 | 18 | 13 | 15 | 67 | 60 | 67 | +7 |
| Port Vale | 46 | 15 | 16 | 15 | 62 | 57 | 61 | +5 |
| Portsmouth | 46 | 15 | 16 | 15 | 62 | 65 | 61 | -3 |
| Leicester City | 46 | 15 | 14 | 17 | 67 | 79 | 59 | -12 |
| Hull City | 46 | 14 | 16 | 16 | 58 | 65 | 58 | -7 |
| Watford | 46 | 14 | 15 | 17 | 58 | 60 | 57 | -2 |
| Plymouth Argyle | 46 | 14 | 13 | 19 | 58 | 63 | 55 | -5 |
| Oxford United | 46 | 15 | 9 | 22 | 57 | 66 | 54 | -9 |
| Brighton & H. A. | 46 | 15 | 9 | 22 | 56 | 72 | 54 | -16 |
| Barnsley | 46 | 13 | 15 | 18 | 49 | 71 | 54 | -22 |
| West Bromwich A. | 46 | 12 | 15 | 19 | 67 | 71 | 51 | -4 |
| Middlesbrough | 46 | 13 | 11 | 22 | 52 | 63 | 50 | -11 |
| AFC Bournemouth | 46 | 12 | 12 | 22 | 57 | 76 | 48 | -19 |
| Bradford City | 46 | 9 | 14 | 23 | 44 | 68 | 41 | -24 |
| Stoke City | 46 | 6 | 19 | 21 | 35 | 63 | 37 | -28 |



HELPING THE GAME



The Football Trust 1990 has been created to help the game at all levels and to assist clubs meet the requirements of Lord Justice Taylor's Final Report.

Safety and comfort for all spectators is the primary objective and substantial funds have been made available for the provision of seating at Football League grounds. At the same time the Trust's commitment to family and community initiatives will continue with the provision of more family enclosures, better toilet facilities, covered accommodation, artificial pitches for local use and the development of women's and junior football particularly through community programmes, plus a wide range of policing and crowd control measures.

Each year The Trust expects to receive £20 million from the reduction in Pool Betting Duty plus the £10 million continuing contribution from the Spotting-the-Ball competition organised by Littlewoods, Vernons and Zettlers. This money will be invested in projects which benefit football throughout the United Kingdom.

SWINDON TOWN FIXTURES 1990/91

1990

| | | |
|------------|----------------------|---|
| Sat Aug 25 | Charlton Athletic | A |
| Tue Aug 28 | Ipswich Town | H |
| Wed Aug 29 | League Cup 1 (1) | |
| Sun Sep 2 | Bristol City | H |
| Wed Sep 5 | League Cup 1 (2) | |
| Sat Sep 8 | Hull City | A |
| Sat Sep 15 | Middlesbrough | H |
| Tue Sep 18 | Wolverhampton W. | H |
| Sat Sep 22 | Oxford United | A |
| Wed Sep 26 | League Cup 2 (1) | |
| Sun Sep 30 | Millwall | H |
| Tue Oct 2 | Oldham Athletic | A |
| Sat Oct 6 | Brighton & H. Albion | A |
| Wed Oct 10 | League Cup 2 (2) | |
| Sat Oct 13 | Bristol Rovers | H |
| Sat Oct 20 | West Ham United | H |
| Wed Oct 24 | Leicester City | A |
| Sat Oct 27 | Barnsley | A |
| Wed Oct 31 | League Cup 3 | |
| Sat Nov 3 | Port Vale | H |
| Sat Nov 10 | Portsmouth | H |
| Sat Nov 17 | Sheffield Wednesday | A |
| | F.A. Cup 1 | |
| Sat Nov 24 | Notts County | A |
| Wed Nov 28 | League Cup 4 | |
| Sat Dec 1 | Blackburn Rovers | H |
| Sat Dec 8 | Ipswich Town | A |
| | F.A. Cup 2 | |
| Sat Dec 15 | Charlton Athletic | H |
| Sat Dec 22 | West Bromwich Albion | H |
| Wed Dec 26 | Newcastle United | A |
| Sat Dec 29 | Watford | A |

1991

| | | |
|------------|------------------------|---|
| Tue Jan 1 | Plymouth Argyle | H |
| Sat Jan 5 | F.A. Cup 3 | |
| Sat Jan 12 | Bristol City | A |
| Wed Jan 16 | League Cup 5 | |
| Sat Jan 19 | Hull City | H |
| Sat Jan 26 | F.A. Cup 4 | |
| Sat Feb 2 | Middlesbrough | A |
| Sat Feb 9 | Oxford United | H |
| Tue Feb 12 | Wolverhampton W. | A |
| Wed Feb 13 | League Cup SF (1) | |
| Sat Feb 16 | Sheffield Wednesday | H |
| | F.A. Cup 5 | |
| Sat Feb 23 | Portsmouth | A |
| Wed Feb 27 | League Cup SF (2) | |
| Sat Mar 2 | Blackburn Rovers | A |
| Sat Mar 9 | Notts County | H |
| | F.A. Cup 6 | |
| Tue Mar 12 | Oldham Athletic | H |
| Sat Mar 16 | Millwall | A |
| Wed Mar 20 | Bristol Rovers | A |
| Sat Mar 23 | Brighton & Hove Albion | H |
| Sat Mar 30 | Newcastle United | H |
| Mon Apr 1 | West Bromwich Albion | A |
| Sat Apr 6 | Watford | H |
| Sat Apr 13 | Plymouth Argyle | A |
| | F.A. Cup Semi-Finals | |
| Sat Apr 20 | West Ham United | A |
| Sun Apr 21 | League Cup Final | |
| Sat Apr 27 | Leicester City | H |
| Sat May 4 | Barnsley | H |
| Sat May 11 | Port Vale | A |
| Sat May 18 | F.A. Cup Final | |



WARNING TV SURVEILLANCE

This ground is equipped with

CLOSED CIRCUIT TELEVISION

Installed with the help of a grant from the Football Trust. It is there to increase crowd safety and to help the police. Recording facilities enable film and photographs to be taken of disorder, which may subsequently be used in a court of law.

The Football Trust is funded entirely by the pools companies Littlewoods, Vernons and Zetters from their Spotting-the-Ball competition.

SPALL SPORTSWEAR LIMITED

Official Suppliers to Swindon Town F.C. and Many Other Leading League Clubs

DO CALL AND SEE DOUG WOODMAN AND VIEW THE LARGE RANGE OF FOOTBALL AND OTHER SPORTS GOODS AVAILABLE FROM THE OFFICIAL CLUB SHOP.
OPEN 9.00 to 12.00 2.00 to 5.00 DAILY

SWINDON TOWN

IPSWICH TOWN



FRASER DIGBY.

The England Under-21 keeper was married in the close season.



CRAIG FORREST

A former ice hockey player, now first choice keeper for Canada.



DAVID KERSLAKE

Scored in four successive games for the Town in pre-season friendlies.



FRANK YALLOP

Played for England Youths but, like the keeper, is now a Canadian international.



PAUL BODIN

'Zippy' capped a fine season with a first full appearance for Wales in May.



NEIL THOMPSON

The Ipswich Player of the Year signed last summer for £100,000.



ALAN McLOUGHLIN

Missed most of the pre-season build-up but is now back following his operation.



MICK STOCKWELL

Scored a spectacular own goal in this fixture last season.



COLIN CALDERWOOD

Maximum appearances for the skipper again last year - his third in 5 seasons.



BRIAN GAYLE

A club record signing earlier this year, at £330,000.



JON GITTENS

Scored four times for the Town last year - all away from the County Ground.



DAVID LINIGHAN

Another £300,000 plus purchase and brother to Andy of Arsenal.



TOM JONES

Found the net against Hibs, but hasn't hit a League goal for almost a year.



ROMEO ZONDERVAN

Has now spent eight years in League football since arriving from Holland.



DUNCAN SHEARER

Another 27 goals last season for Duncan, who celebrates his 28th birthday today.



TONY HUMES

Versatile 24 year old whose career has been interrupted by injury.



SHAUN CLOSE

Gets his chance to claim a regular place after some impressive warm-up games.



CHRIS KIWOMYA

A prolific goalscorer at youth level. Scored 5 times last season.



ROSS MacLAREN

Ever-present in 61 games last year and his long-range shooting brought 5 goals.



IAN REDFORD

Now 30, Ian has played most of his football north of the border.



STEVE FOLEY

Makes his 200th Football League appearance tonight.



DAVID HILL

Injuries limited David to just three senior appearances last season.



FITZROY SIMPSON DAVE HOCKADAY



DAVID GREGORY JASON DOZZELL



Referee: K. Cooper (Mid Glamorgan)



Linesman Red Trim: K. R. Tilley
Linesman Yellow Trim: B. A. Wigginton

NEXT HOME MATCH: Swindon Town v Bristol City
Sunday September 2nd 1990

TODAY'S MATCH SPONSOR:

Redman
Sheet Metal Ltd. -
of Swindon

TODAY'S BALL SPONSOR

Hinders of Ermin Street

TODAY'S MASCOT

ALAN YOUNG celebrated his seventh birthday on August 12. He lives in Haydon Wick and attends Haydon Wick Primary School. His favourite player is David Kerslake.



IMPORTANT SAFETY NOTICE
IMPORTANT SAFETY ANNOUNCEMENTS BY THE CLUB MANAGEMENT OVER THE PUBLIC ADDRESS SYSTEM WILL BE PRECEDED BY A LOUD SIGNAL TO CATCH THE ATTENTION OF SPECTATORS.